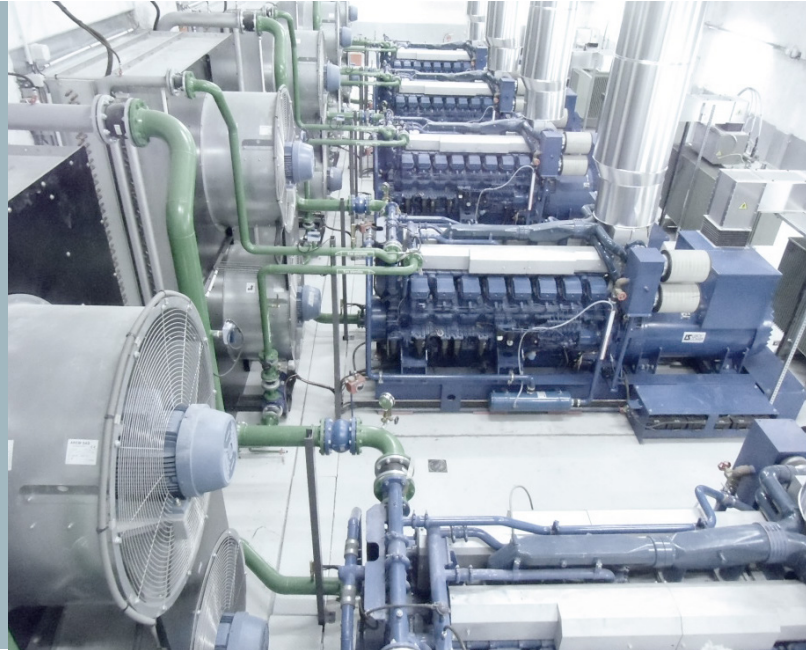


GENERATOR SETS FOR RELIABLE POWER

- Standby, prime & continuous power
- Full range from 770 up to 2935 kVA
- Designed and produced in Europe
- Suitable for hospitals, data centres, industry and many more



Advanced technology

We can offer you highly reliable diesel generator sets.

Global Reach

As a global operating company with subsidiaries in all parts of the world our goal is to help you wherever you need it. Our generator sets are made to perform even under the toughest conditions and are known for their durability and reliability.

Reliable Generator Set

The Mitsubishi diesel generator set lineup comprises of a power output from 770 up to 2935 kVA. These generator sets can be found in a multitude of applications including standby, emergency power, prime power for peak shaving or base load power plants.

Our generator sets are built with the well known and reliable Mitsubishi engines, Mitsubishi turbo's and a top quality brand of alternators making them outstandingly reliable and excellent in performance. We have a relentless focus on product quality and production management which makes us a reliable partner for customers for many years.

Partner

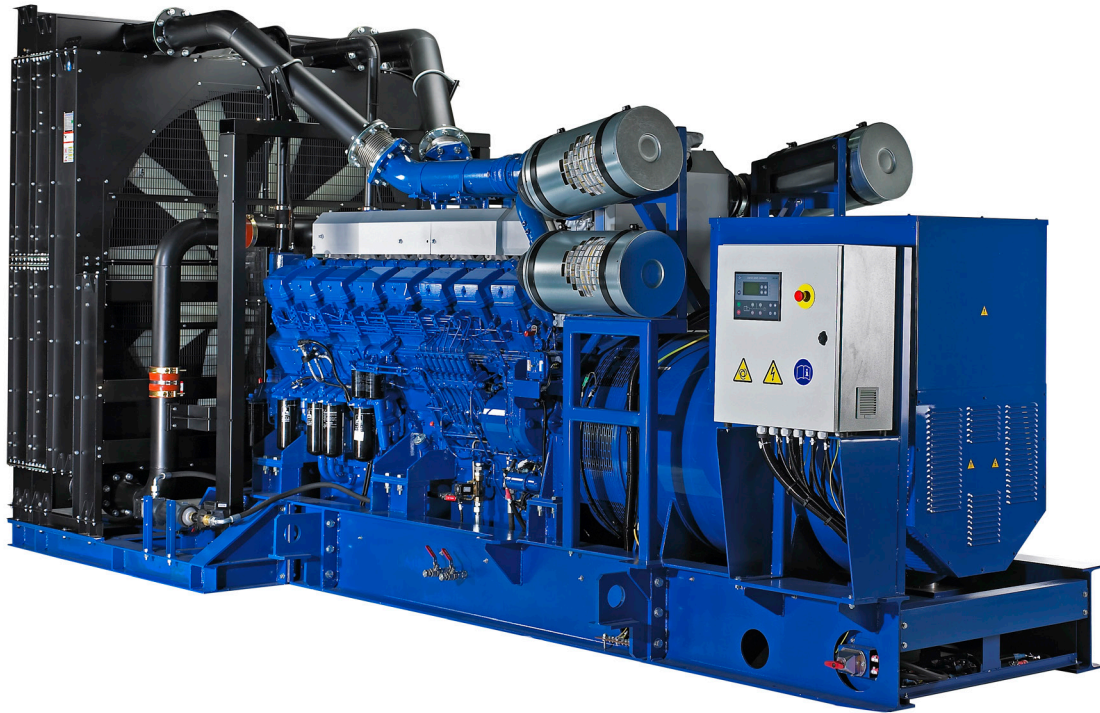
With a relentless focus on engineering and product design we continuously improve our products. Always ensuring the Japanese quality standards, the generator sets are built to last and with ease of installation and maintenance in mind.

We understand that building the right solutions begins with building strong, respectful relationships. By listening to our customers and fully understanding their needs, we work as a team to create products that keep everyone's best interest in mind.

Mitsubishi Heavy Industries Group

For over 130 years, Mitsubishi Heavy Industries (MHI) Group offers world-class innovative, integrated, and sustainable technologies and solutions to create a better future for the world. We use a forward-thinking approach and deep industrial knowledge to bring together people, businesses, and ideas to achieve shared success.

As a global leader in engineering and manufacturing, MHI Group delivers innovative and integrated solutions across a wide range of industries from commercial aviation and transportation to power plants and gas turbines, and from machinery and infrastructure to integrated defense and space systems.



MGS-EU 2500 C

Symbol	Rating	Definition	Operating hours per year	Overload
LTP	Standby	Power available in emergency mode.	< 500 Hrs	no
Prime	Prime Limited	Power available in emergency mode.	< 500 Hrs	10% (1h/12h)
PRP	Prime	Power available with variable load.	unlimited	10%
DCCP	Data Center	Power available for data center load. Complies to Uptime Institute Tier III and Tier IV topology.	unlimited	10%
COP	Continuous	Power available in continuous mode.	unlimited	no

TECHNICAL INFORMATION

Emission - Unregulated | MGS-EU with Radiator - Low Voltage (400V)

	Rating	Output				Mitsubishi engine model
		Leroy Somer alternator		Mecc Alte alternator		
		kWe	kVA	kWe	kVA	
MGS-EU 2800 B	LTP	2225	2780	2240	2800	S16R2-PTAW2-E
MGS-EU 2800 C	Prime/DCCP	2024	2530	2040	2550	S16R2-PTAW2-E
MGS-EU 2700 B	LTP	2000	2500	2020	2525	S16R2-PTAW
MGS-EU 2700 C	PRP / DCCP	1816	2270	1825	2280	S16R2-PTAW
MGS-EU 2500 B	LTP	1760	2200	1820	2275	S16R-PTAA2
MGS-EU 2500 C	PRP	1600	2000	1628	2035	S16R-PTAA2
MGS-EU 2000 B	LTP	1672	2090	1680	2100	S16R-PTA2
MGS-EU 2000 C	PRP / DCCP	1520	1900	1520	1900	S16R-PTA2
MGS-EU 1700 B	LTP	1528	1910	1532	1915	S16R-PTA
MGS-EU 1700 C	PRP / DCCP	1392	1740	1400	1750	S16R-PTA
MGS-EU 1600 B	LTP	1320	1650	1320	1650	S12R-PTAA2
MGS-EU 1600 C	PRP	1200	1500	1200	1500	S12R-PTAA2
MGS-EU 1400 B	LTP	1224	1530	1236	1545	S12R-PTA2
MGS-EU 1400 C	PRP / DCCP	1112	1390	1120	1400	S12R-PTA2
MGS-EU 1200 B	LTP	1132	1415	1144	1430	S12R-PTA
MGS-EU 1200 C	PRP / DCCP	1028	1285	1040	1300	S12R-PTA
MGS-EU 1000 B	LTP	930	1163	936	1170	S12H-PTA
MGS-EU 1000 C	PRP / DCCP	845	1056	850	1063	S12H-PTA
MGS-EU 0700 B	LTP	676	845	676	845	S6R2-PTAA
MGS-EU 0700 C	PRP	616	770	616	770	S6R2-PTAA
MGS-EU 2700 COP	COP	1544	1930	1560	1950	S16R2-PTAW
MGS-EU 1700 COP	COP	1256	1570	1256	1570	S16R-PTA
MGS-EU 1200 COP	COP	916	1145	920	1150	S12R-PTA

Emission - 2g NOx TA Luft | MGS-EU with Radiator - Low Voltage (400V)

MGS-EU 2700F1 B	LTP	2000	2500	2008	2510	S16R2-F1PTAW
MGS-EU 2700F1 C	PRP / DCCP	1808	2260	1816	2270	S16R2-F1PTAW
MGS-EU 2500F1 B	LTP	1808	2260	1816	2270	S16R-F1PTAW2
MGS-EU 2500F1 C	PRP / DCCP	1648	2060	1656	2070	S16R-F1PTAW2
MGS-EU 1600F1 B	LTP	1360	1700	1360	1700	S12R-F1PTAW2
MGS-EU 1600F1 C	PRP / DCCP	1232	1540	1240	1550	S12R-F1PTAW2

Emission - Unregulated | MGS-EU without Radiator - Low Voltage (400V)

	Rating	Output				Mitsubishi engine model
		Leroy Somer alternator		Mecc Alte alternator		
		kWe	kVA	kWe	kVA	
MGS-EU 2800 B	LTP	2328	2910	2348	2935	MGS-EU 2800 B
MGS-EU 2800 C	Prime/DCCP	2108	2635	2136	2670	MGS-EU 2800 C
MGS-EU 2700 B	LTP	2080	2600	2100	2625	MGS-EU 2700 B
MGS-EU 2700 C	PRP / DCCP	1888	2360	1900	2375	MGS-EU 2700 C
MGS-EU 2500 B	LTP	-	-	-	-	MGS-EU 2500 B
MGS-EU 2500 C	PRP	-	-	-	-	MGS-EU 2500 C
MGS-EU 2000 B	LTP	1720	2150	1720	2150	MGS-EU 2000 B
MGS-EU 2000 C	PRP / DCCP	1560	1950	1580	1975	MGS-EU 2000 C
MGS-EU 1700 B	LTP	1560	1950	1560	1950	MGS-EU 1700 B
MGS-EU 1700 C	PRP / DCCP	1420	1775	1428	1785	MGS-EU 1700 C
MGS-EU 1600 B	LTP	-	-	-	-	MGS-EU 1600 B
MGS-EU 1600 C	PRP	-	-	-	-	MGS-EU 1600 C
MGS-EU 1400 B	LTP	1260	1575	1264	1580	MGS-EU 1400 B
MGS-EU 1400 C	PRP / DCCP	1140	1425	1150	1437	MGS-EU 1400 C
MGS-EU 1200 B	LTP	1160	1450	1168	1460	MGS-EU 1200 B
MGS-EU 1200 C	PRP / DCCP	1060	1325	1064	1330	MGS-EU 1200 C
MGS-EU 1000 B	LTP	970	1213	973	1216	MGS-EU 1000 B
MGS-EU 1000 C	PRP / DCCP	880	1100	888	1110	MGS-EU 1000 C
MGS-EU 0700 B	LTP	-	-	-	-	MGS-EU 0700 B
MGS-EU 0700 C	PRP	-	-	-	-	MGS-EU 0700 C
MGS-EU 2700 COP	COP	1615	2019	1630	2037	S16R2-PTAW
MGS-EU 1700 COP	COP	1280	1600	1280	1600	S16R-PTA
MGS-EU 1200 COP	COP	944	1180	960	1200	S12R-PTA

Emission - 2g NOx TA Luft | MGS-EU without Radiator

MGS-EU 2700F1 B	LTP	2080	2600	2090	2612	S16R2-F1PTAW
MGS-EU 2700F1 C	PRP / DCCP	1888	2360	1900	2375	S16R2-F1PTAW
MGS-EU 2500F1 B	LTP	1864	2330	1848	2310	S16R-F1PTAW2
MGS-EU 2500F1 C	PRP / DCCP	1700	2125	1680	2100	S16R-F1PTAW2
MGS-EU 1600F1 B	LTP	1400	1750	1408	1760	S12R-F1PTAW2
MGS-EU 1600F1 C	PRP / DCCP	1280	1600	1280	1600	S12R-F1PTAW2

TECHNICAL INFORMATION

Emission - Unregulated | MGS-EU with Radiator - High Voltage (6kV)*

	Rating	Output				Mitsubishi engine model
		Leroy Somer alternator		Mecc Alte alternator		
		kWe	kVA	kWe	kVA	
MGS-EU 2800HV B	LTP	2240	2800	2240	2800	S16R2-PTAW2-E
MGS-EU 2800HV C	Prime/DCCP	2036	2545	2024	2530	S16R2-PTAW2-E
MGS-EU 2700HV B	LTP	2012	2515	2016	2520	S16R2-PTAW
MGS-EU 2700HV C	PRP / DCCP	1816	2270	1809	2260	S16R2-PTAW
MGS-EU 2500HV B	LTP	1816	2270	1816	2270	S16R-PTAA2
MGS-EU 2500HV C	PRP	1616	2020	1616	2020	S16R-PTAA2
MGS-EU 2000HV B	LTP	1672	2090	1670	2087	S16R-PTA2
MGS-EU 2000HV C	PRP / DCCP	1520	1900	1516	1895	S16R-PTA2
MGS-EU 1700HV B	LTP	1496	1870	1520	1900	S16R-PTA
MGS-EU 1700HV C	PRP / DCCP	1392	1740	1385	1732	S16R-PTA
MGS-EU 1600HV B	LTP	1348	1685	1340	1675	S12R-PTAA2
MGS-EU 1600HV C	PRP	1224	1530	1220	1525	S12R-PTAA2
MGS-EU 1400HV B	LTP	1228	1535	1220	1525	S12R-PTA2
MGS-EU 1400HV C	PRP / DCCP	1112	1390	1110	1388	S12R-PTA2
MGS-EU 1200HV B	LTP	1136	1420	1120	1400	S12R-PTA
MGS-EU 1200HV C	PRP / DCCP	1032	1290	1020	1275	S12R-PTA
MGS-EU 1000HV B	LTP	932	1165	928	1160	S12H-PTA
MGS-EU 1000HV C	PRP / DCCP	848	1060	840	1050	S12H-PTA
MGS-EU 2700HV	COP	1544	1930	1544	1930	S16R2-PTAW
MGS-EU 1700HV	COP	1248	1560	1240	1550	S16R-PTA
MGS-EU 1200HV	COP	920	1150	910	1138	S12R-PTA

Emission - 2g NOx TA Luft | MGS-EU with Radiator - High Voltage (6kV)*

MGS-EU 2700F1HV B	LTP	2000	2500	2000	2500	S16R2-F1PTAW
MGS-EU 2700F1HV C	PRP / DCCP	1807	2260	1800	2250	S16R2-F1PTAW
MGS-EU 2500F1HV B	LTP	1804	2255	1808	2260	S16R-F1PTAW2
MGS-EU 2500F1HV C	PRP / DCCP	1648	2060	1644	2055	S16R-F1PTAW2
MGS-EU 1600F1HV B	LTP	1360	1700	1356	1695	S12R-F1PTAW2
MGS-EU 1600F1HV C	PRP / DCCP	1236	1545	1232	1540	S12R-F1PTAW2

*High Voltage lineup also available from 3kV to 12kV.

Emission - Unregulated | MGS-EU without Radiator - High Voltage (6kV)*

	Rating	Output				Mitsubishi engine model
		Leroy Somer alternator		Mecc Alte alternator		
		kWe	kVA	kWe	kVA	
MGS-EU 2800HV B	LTP	2344	2930	2336	2920	S16R2-PTAW2-E
MGS-EU 2800HV C	Prime/DCCP	2132	2665	2120	2650	S16R2-PTAW2-E
MGS-EU 2700HV B	LTP	2068	2585	2080	2600	S16R2-PTAW
MGS-EU 2700HV C	PRP / DCCP	1888	2360	1884	2355	S16R2-PTAW
MGS-EU 2500HV B	LTP	-	-	-	-	S16R-PTAA2
MGS-EU 2500HV C	PRP	-	-	-	-	S16R-PTAA2
MGS-EU 2000HV B	LTP	1720	2150	1716	2145	S16R-PTA2
MGS-EU 2000HV C	PRP / DCCP	1568	1960	1560	1950	S16R-PTA2
MGS-EU 1700HV B	LTP	1496	1870	1540	1925	S16R-PTA
MGS-EU 1700HV C	PRP / DCCP	1420	1776	1416	1770	S16R-PTA
MGS-EU 1600HV B	LTP	-	-	-	-	S12R-PTAA2
MGS-EU 1600HV C	PRP	-	-	-	-	S12R-PTAA2
MGS-EU 1400HV B	LTP	1228	1535	1250	1562	S12R-PTA2
MGS-EU 1400HV C	PRP / DCCP	1144	1430	1136	1420	S12R-PTA2
MGS-EU 1200HV B	LTP	1168	1460	1150	1438	S12R-PTA
MGS-EU 1200HV C	PRP / DCCP	1064	1330	1048	1310	S12R-PTA
MGS-EU 1000HV B	LTP	968	1210	962	1202	S12H-PTA
MGS-EU 1000HV C	PRP / DCCP	880	1100	878	1097	S12H-PTA
MGS-EU 2700HV COP	COP	1616	2020	1616	2020	S16R2-PTAW
MGS-EU 1700HV COP	COP	1280	1600	1270	1588	S16R-PTA
MGS-EU 1200HV COP	COP	948	1185	935	1169	S12R-PTA

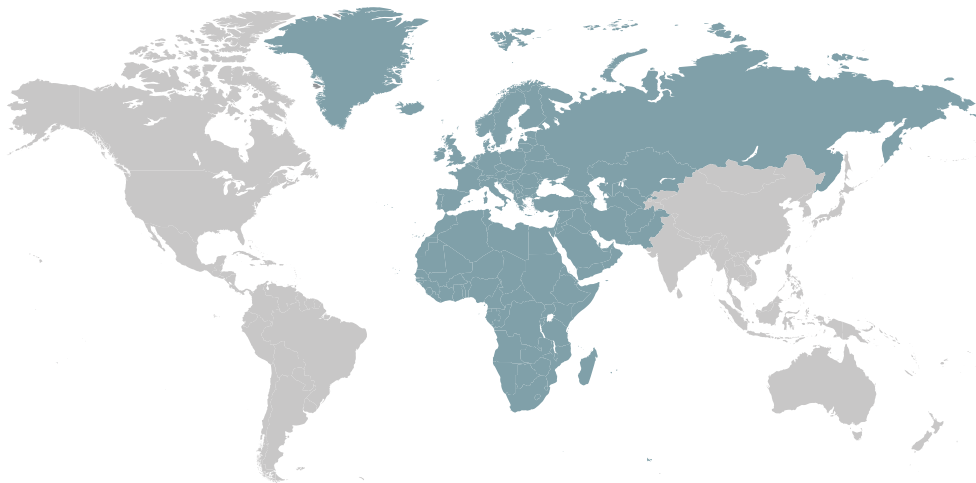
Emission - 2g NOx TA Luft | MGS-EU without Radiator - High Voltage (6kV)*

MGS-EU 2700F1HV B	LTP	2068	2585	2080	2600	S16R2-F1PTAW
MGS-EU 2700F1HV C	PRP / DCCP	1888	2360	1885	2356	S16R2-F1PTAW
MGS-EU 2500F1HV B	LTP	1804	2255	1864	2330	S16R-F1PTAW2
MGS-EU 2500F1HV C	PRP / DCCP	1704	2130	1704	2130	S16R-F1PTAW2
MGS-EU 1600F1HV B	LTP	1400	1750	1395	1740	S12R-F1PTAW2
MGS-EU 1600F1HV C	PRP / DCCP	1280	1600	1268	1585	S12R-F1PTAW2

*High Voltage lineup also available from 3kV to 12kV.

Your loyal, reliable partner since 1917

In 1917, Mitsubishi Heavy Industries (MHI) became the first Japanese company to develop and build a diesel engine, and since then has steadfastly pioneered technologies for the reciprocating engine. MHI offers a broad line-up, ranging from construction machinery and marine engines to engines for power generation. In recent years, the company has been involved in the general development of advanced gas turbines, rocket engines, and other types of internal combustion engines, even as it continues to look at the true significance and its decades-long quest to further refine the reciprocating engine.



All specifications and data in this brochure are subject to change without prior notice.



**Headquarters Engine, Genset & Powerplant Division
Europe, Middle East and Africa**

Damsluisweg 2
1332 EC Almere
P.O. Box 30101
1303 AC Almere
The Netherlands

Phone: +31 (0)36 5388311
Email: engines@mtee.eu

www.mtee.eu