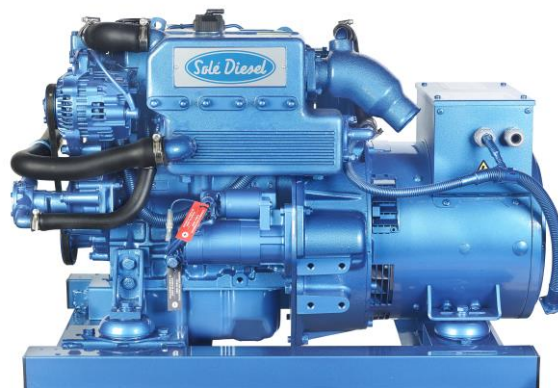


14 GTA/GTAC

Three-Phase



General data

| | | | |
|------------------------|--------------------|------------------|-----------|
| Maximum power*: | 10,9 kW (13,6 kVA) | Voltage: | 480/277 V |
| Prime Power**: | 9,9 kW | Amperage: | 16,4 A |
| Frequency: | 60 Hz | Phases: | 3 |

Dimensions and weights

| | | | |
|-------------------------------------|--------|----------------------------------|---------|
| Total length without canopy: | 885 mm | Total length with canopy: | 1032 mm |
| Total width without canopy: | 580 mm | Total width with canopy: | 580 mm |
| Total height without canopy: | 609 mm | Total height with canopy: | 668 mm |
| Dry weight without canopy: | 264 Kg | Dry weight with canopy: | 300 Kg |

Engine

| | | | |
|----------------------------------|-------------------------|------------------------------|-------------------------|
| Base engine manufacturer: | Mitsubishi | Diameter: | 78 mm (3,07 in) |
| Model Solé Diesel: | MINI-33 | Stroke: | 92 mm (3,62 in) |
| Type: | 4 No. of Strokes | Compression ratio: | 22:1 |
| Engine RPM: | 1800 | Injection system: | Mechanical and indirect |
| Number of cylinders: | 3 | Intake system: | Naturally aspirated |
| Total displacement: | 1318 cc | SAE Flywheel housing: | SAE 5 |
| Oil type: | SAE 15W40 | Coolant capacity: | 5,7 L (1,51 gal) |
| Oil capacity: | 4 L (1,06 gal) | Flywheel: | SAE 7 1/2 |
| Power: | 13,8 kW (18,77 CV) | Coolant flow rate: | 47 l/min (12,42 gal/m) |
| Salt water flow rate: | 19,8 l/min (5,23 gal/m) | Intake air flow rate: | 1,1 m3/m |
| Exhaust type: | Wet exhaust elbow | Belt protection: | Optional |

Rating conditions according to ISO 3046 (100 kPa barometric pressure, 30 % relative humidity and 25 °C (77 ° F))

* Maximum output power: maximum power supplied by the genset at full load

** Prime Power: rated power according to ISO 3046 and ISO 8528-1. 10 % overload capacity one hour in twelve hours.

1 kW \cong 1,36 CV 1 kW \cong 1,36 HP (metric) 1 kW \cong 1,36 CH

Fuel system details

| | | | |
|--------------------------|----------------------|-----------------------------|---------------------|
| Consumption 25%: | 1,7 L/H (0,45 Gal/H) | Fuel type: | Diesel |
| Consumption 50%: | 2,2 L/H (0,58 Gal/H) | Fuel standards: | Fueloil diesel ASTM |
| Consumption 75%: | 3 L/H (0,79 Gal/H) | Injection pump type: | In line |
| Consumption 100%: | 3,8 L/H (1 Gal/H) | Governor type: | Mechanical |

Electrical system

| | | | |
|-------------------------|----------|------------------------------|----------|
| Battery voltage: | 12 V | Stop solenoid type: | ETR |
| Starter motor: | 1,7 kW | Alternator: | 50 A |
| Earth isolated: | Optional | IP 65 box kit: | Optional |
| #N/D | Optional | Current transformers: | Optional |

Installation details

| | | | |
|--|-----------------|---------------------------------------|------------------|
| Exhaust hose inner diameter: | 50 mm (1,97 in) | Maximum fuel lift height: | 0,3 m (0,98 ft) |
| Sea water hose inner diameter: | 20 mm (0,79 in) | Maximum raw water lift height: | 1,5 m (59,06 in) |
| Fuel feeding hose inner diameter: | 8 mm (0,31 in) | Maximum sea water temperature: | 32 °C (89,6 °F) |
| Fuel return hose inner diameter: | 6 mm (0,24 in) | Maximum installation angle***: | 25 ° |
| Minimum battery capacity: | 12 V 65 Ah | | |

Alternator details

| | | | |
|-------------------------|---------|---------------------------------------|-------------------------------------|
| Brand: | Sincro | Cos φ: | 0,8 |
| Model: | SK160CA | Tropicalized: | Yes |
| Regulator type: | BL4 | Excitation system: | Brushless |
| Number of poles: | 4 | Voltage regulation accuracy**: | 1% |
| Isolation type*: | H | Standards: | EN 60034-1, IEC 60034-1, ISO 8528-3 |
| IP protection*: | 23 | Alternator type: | Synchronous |

Standard equipment

| | |
|---------------------------------|-------------------------------|
| 4 m electrical wiring extension | SCO 5 control panel |
| Oil extraction pump | Owner's and alternator manual |
| Rigid bed | Packaging |
| Silentblocks | |

Optional accessories

| | |
|--|---|
| Siphon break kit mandatory if generator is below waterline | Keel Cooling conversion for dry and wet exhaust |
| Engine electrical system at 24 V | Double walled pipes and alarm kit |
| Service/Cruise Kits: fuel and oil filters, raw water pump, impeller, alternator belt,... | Low coolant level shut down switch |
| Dry Exhaust system | Fuel filter/water separator |
| Wet Exhaust System | Gas/Water Separator |
| Water Filters | Fuel Hose |
| Sea water cock | Exhaust Hose |
| Welcome Kit | Raw water hose |

* Other protections available

** With load from 0 to 100%, speed variation from -2% up to +5%, power factor 0,8 linear and balanced load.

*** In all directions

For other requirements please contact the Sales Dept.



SCO 5 Panel



General Description

- Graphic LCD with light Display, 128 x 64 pixels
- 3 LED indicators
- Marine genset measures (see display information)
- Marine genset protections (see alarm management)
- Running hour indicator
- Type B USB for programming
- Programming from the same panel
- Universal Interface
- Preheating function
- D+ preexcitation terminal
- CAN bus output with SAEJ1939 protocol
- 2 multipurpose timers
- Dimensions 118x 108 x 43 mm
- Weight 246 g

Alarm Management

Shutdown (SD)

- High coolant temperature
- Low oil pressure
- Overspeed
- Overload*
- Short circuit*
- Overcurrent*
- Over/Under voltage
- Over/Under frequency
- Emergency stop

Warnings (WRN)

- Over/Under battery voltage
- Maintenance request

Sensor Fails (FLS)

Power Supply

- Voltage supply 12/24 DC with fuse protection
- Consumption 60/35 mA

Operating Conditions

- Operating temperature -20+70 °C
- Humidity 95 % Without condensation
- Front Panel Protection IP65

Standard Conformity

- Low Voltage Directive EN 61010-1:95+A1:97
- Electromagnetic EN 50081-1:94, EN 50081-2:96
- Compatibility EN 50082-1:99, EN 50082-2:97

Display Information

Measurement

- L1-L3 Voltage (V), Frequency (Hz), Oil Pressure, (bar)
- Coolant Temperature (°C), Battery, Voltage (V), RPM
- Active Power* (kW), Apparent, Power* (kVA), Current* (A), PF*

History log

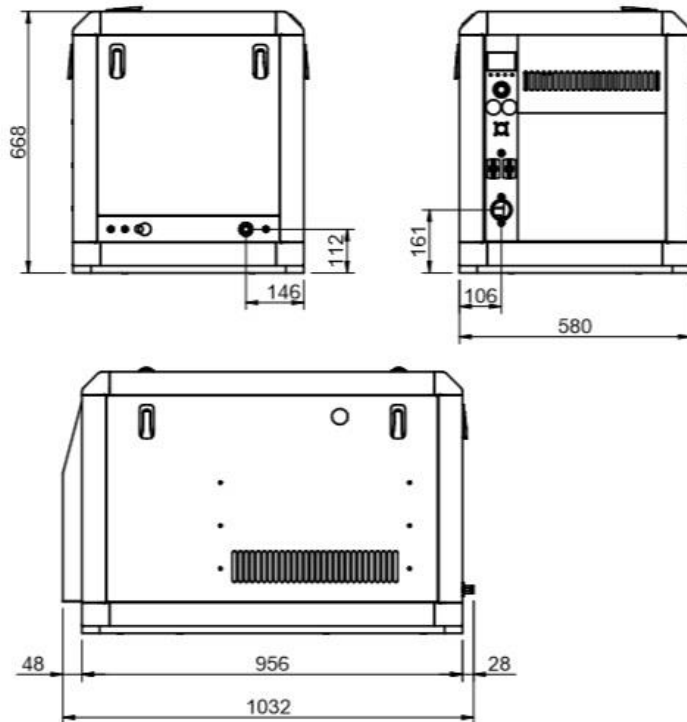
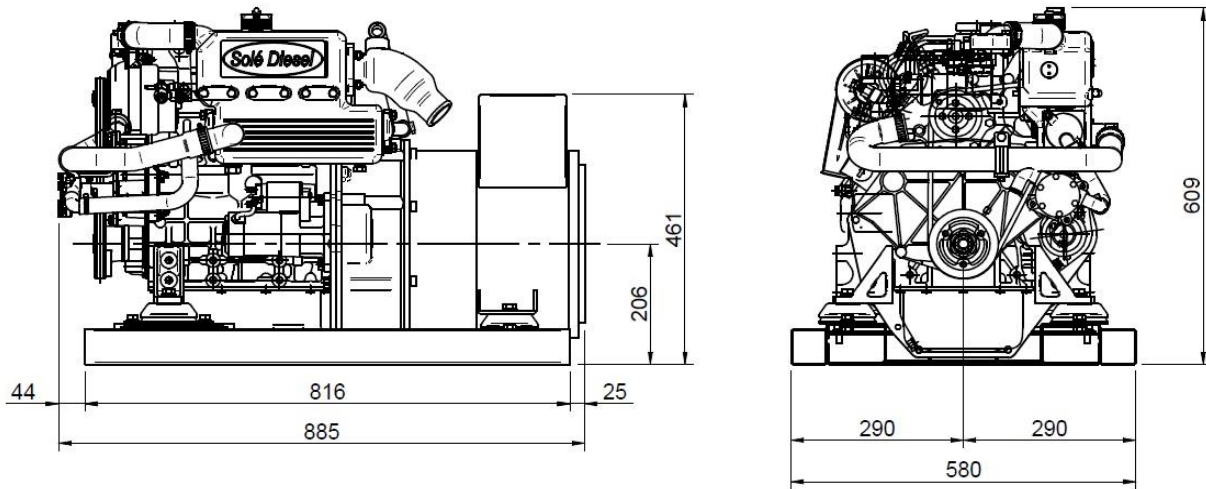
Function Description

- OFF Mode
- MAN Mode (manual start/stop engine)
- AUT Mode (auto start/stop engine)



* The specified function needs the current transformers (Optional Equipment) for showing the information in panel display.

Dimensions



Authorized dealer

www.solediesel.com
info@solediesel.com

Detailed drawings, brochures and manuals are available on the web [solediesel.com](http://www.solediesel.com). All rights reserved. Technical specifications, data and presentation are subjected to variations, changes and updates without prior notice. Non-contractual information.